

[www.sreemaavi.com](http://www.sreemaavi.com)

Builders & Developers:



Spellbound Towers, Level - 3, Hi-Tension X Roads,  
Sainikpuri, Secunderabad - 500094,

Cell: +91 92777 99999, +91 76774 99999  
E\_mail: info@sreemaavi.com

Site Address : Raj Gardens, Opp. to Raja Convention  
Centre, Yapral, Secunderabad - 500 087.

NOTE : This brochure is only a conceptual presentation of the project and not a legal offering.  
The promoters reserve the right to make changes in plans, specifications and elevation, as deemed fit.

Concept by **kreadz** +91 9989 11 99 00



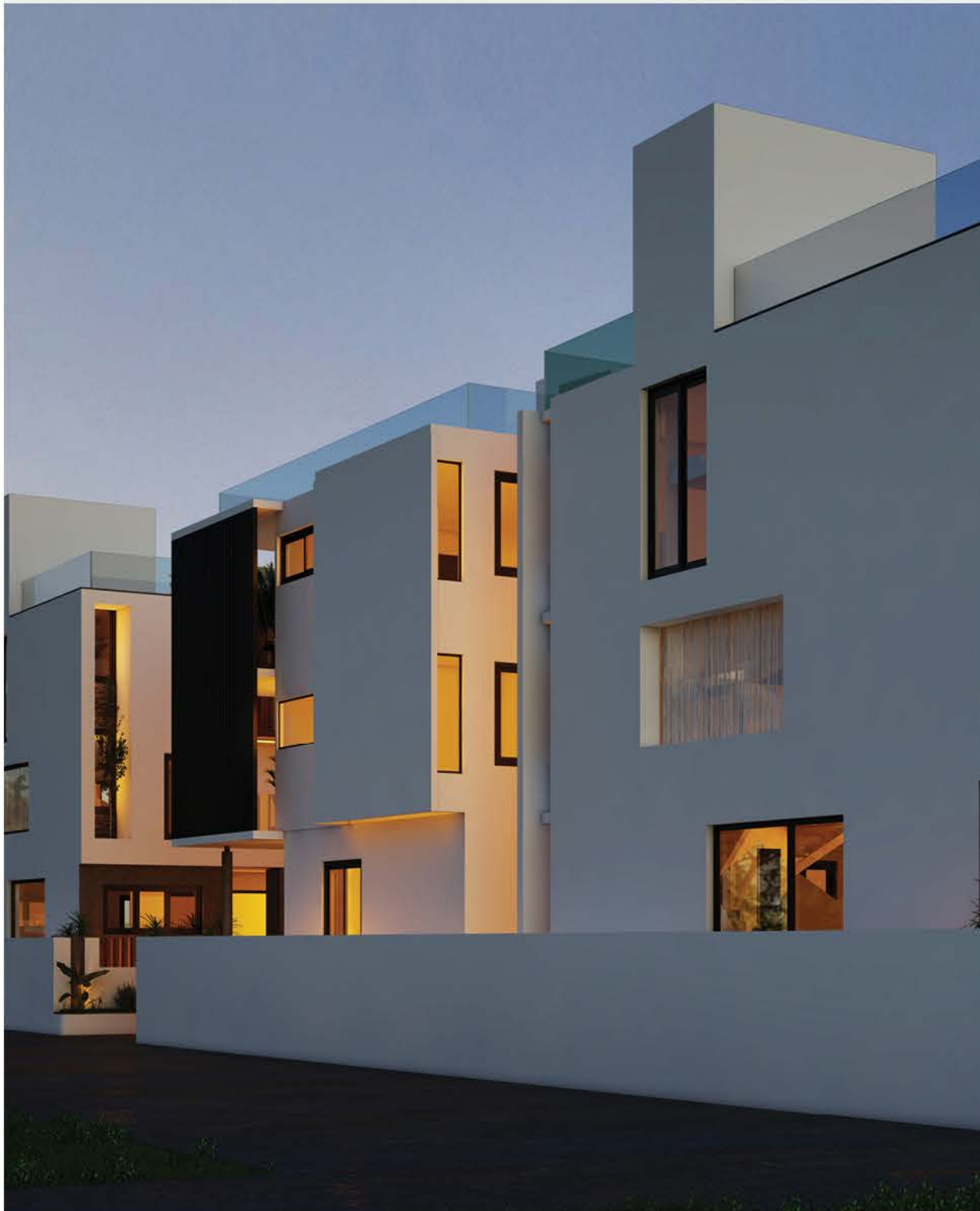
INSPIRED BY  
NATURE

Deluxe Independent Villas @ Yapral, Hyderabad



The place  
to live rejuvenated  
is this

We belong to an era where everything around us is prone to change, and change dynamically. Every day, we wake up to a whole new environment, one that is delightful to belong to, reflecting the progress that we make. But then, somewhere along the way, while we have made progress, we seem to be losing out on the ways of life that nature created for us. At Lake Meadows, we are trying to bring at least a part of it – for you. We are happy to bring a piece of nature to you, with Gardenia. So you live rejuvenated.







East Facing Villa

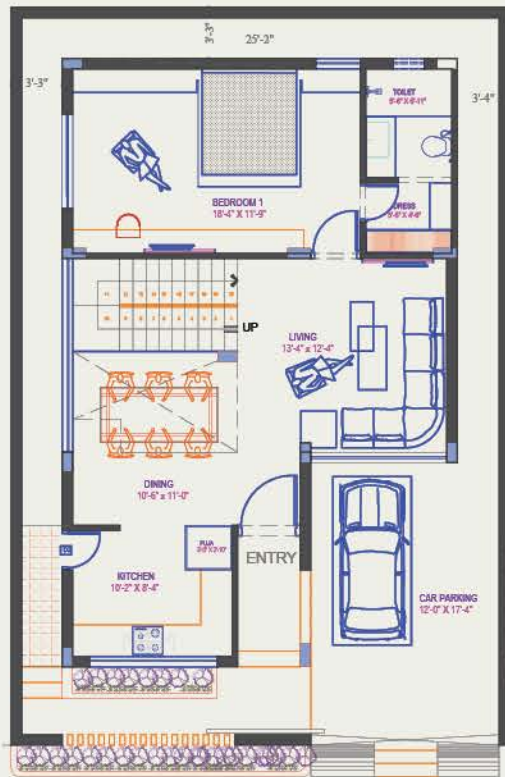


There's green  
and then there's  
more green

At SREEMAAVI Lake Meadows, we are trying to give the phrase 'concrete jungle' a different definition. The aim is to make this a place where the lifelessness of concrete is balanced with the delights of greenery and openness that will surround this premium residential community. More because we want you to breathe fresh, and even more because we care for your living as much as we care for ours. Should we say, welcome back to a greener and brighter living.







Ground Floor Plan

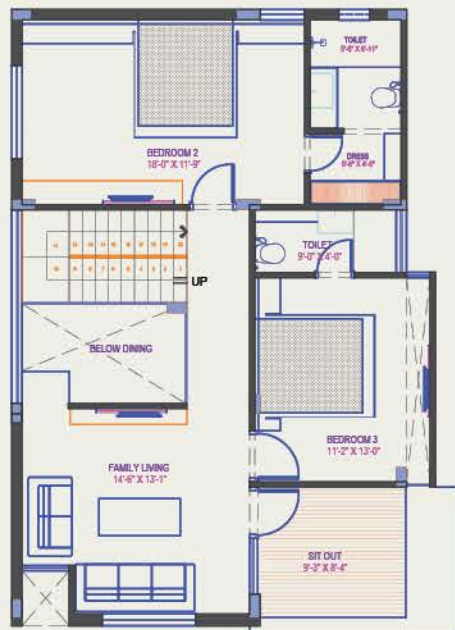
Homes that  
will be great  
neighbourhoods



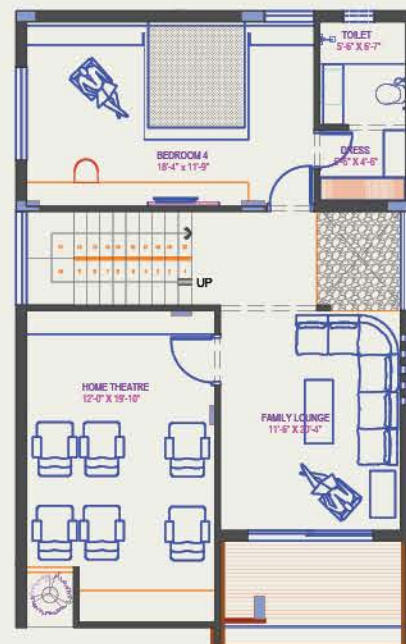
### EAST FACING VILLA

Plot Size : 32'X47'  
167 Sq.yds.

Ground Floor	1053 Sq.ft.
First Floor	1065 Sq.ft.
Second Floor	1068 Sq.ft.
Staircase Head Room	0196 Sq.ft.
<b>Total Built Up Area</b>	<b>3382 Sq.ft.</b>



First Floor Plan



Second Floor Plan



Second Floor Plan



First Floor Plan



Ground Floor Plan





It's all that  
a home can impress  
you with

What do we look for in a home? We reckon a home should set up a seamless bond with you first, it should be able to resonate with your feelings, and then, your home should be the place you long to go back to – every single end of day. We believe that Lake Meadows has all those attributes and a lot more. Let every dawn help you discover more of life, and every night be the time of delight. Get ready for life undiscovered at Sreemavi Lake Meadows.



West Facing Villa





Second Floor Plan



First Floor Plan



Ground Floor Plan

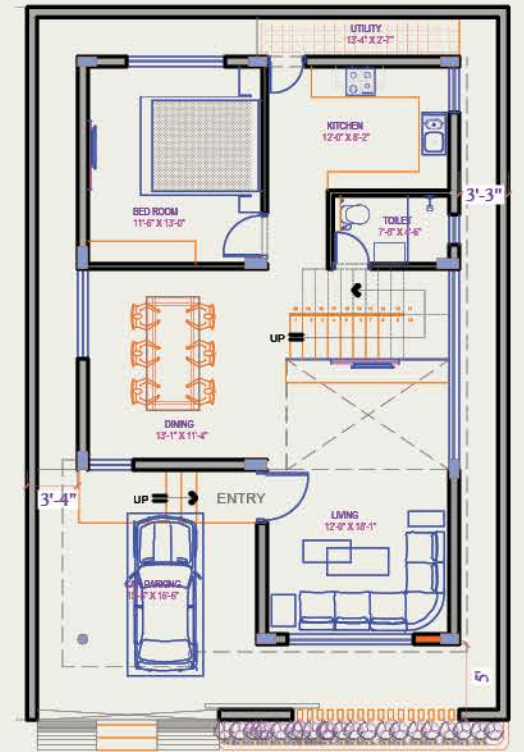
The home  
made by experts  
in habitats



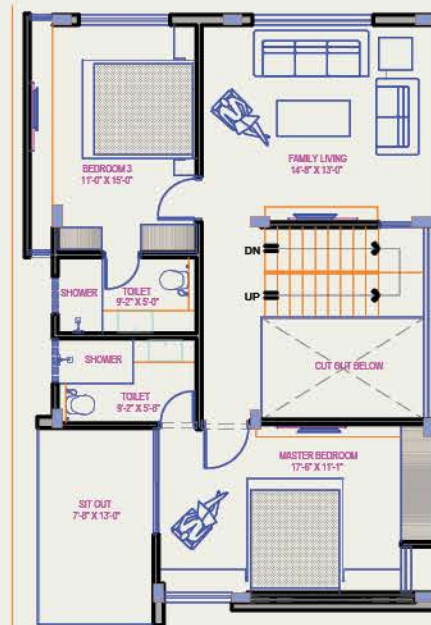
### WEST FACING VILLA

Plot Size : 32'X47'  
167 Sq.yds.

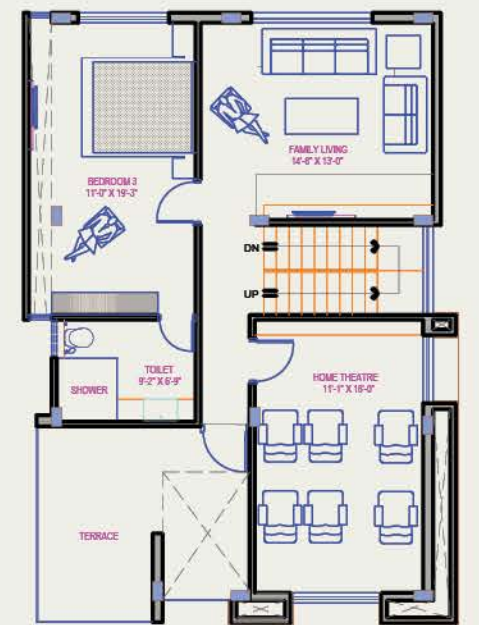
Ground Floor	1062 Sq.ft.
First Floor	1078 Sq.ft.
Second Floor	1086 Sq.ft.
Staircase Head Room	0216 Sq.ft.
<b>Total Built Up Area</b>	<b>3442 Sq.ft.</b>



Ground Floor Plan



First Floor Plan



Second Floor Plan



Sreemavi Lake Meadows brings to you the best blend of leisure and lifestyle that make this place as fascinating as a resort or a club. The great thing is you wouldn't have to step out of the precincts of your home to enjoy them. You will find life to be fulfilling and blissful for every single person at home.



Leisure and lifestyle unlike anything around





# SPECIFICATIONS

**FOUNDATION & STRUCTURE** : RCC-framed structure on footings over hard strata with plinth beams for Earthquake resistant design by using steel and cement of reputed make.

**SUPER STRUCTURE** : Solid / AAC Cement, Brick and Mortar.

**PLASTERING** : Internal: Double-coat cement plaster of 20mm thickness.  
External: Double-coat cement plaster of 20mm thickness.

**DOORS & WINDOWS** : Main Door/ Frame: Teakwood door.  
Internal Doors: Teakwood frames with flush shutters or skin doors.  
Windows & French Door: Sliding UPVC with provision for mosquito mesh track of LG Hausys make.

**PAINTING** : Internal: Smooth finish with Birla putty or equivalent plaster, two coats of acrylic emulsion paint over a coat of primer.  
External: Asian APEX painting with wall care putty and texture.  
Common Area: Asian Tractor emulsion and putty.

**FLOORING** : Staircase and Corridor: Granite tiles with S.S. railing and glass staircase.  
Drawing, Hall, Dining, Bedroom & Kitchen: 4x2 Glossy Vitrified Polished tiles. Anti-skid tiles for toilets and utility.  
Kitchen: 20mm thick Granite platform with SS Sink.



**TILE CLADDING & DADOING** : Toilets: Glossy Vitrified Polished tiles dado up to 8'-0".  
Kitchen: Glazed Ceramic tile dado up to 2'-0" height above kitchen platform.  
Utility / Wash: Glazed Ceramic tiles dado up to 3'

**UTILITY WASH AREA** : Provision for washing machine & dishwasher, separate wet area for washing utensils.

**TOILETS** : (All toilets consist of)  
a) E.W.C - Single piece with concealed flush tank of TOTO make.  
b) Hot & Cold wall mixer with shower, provision for geyser in all bathrooms.  
c) All Sanitary fixtures are C.P. coated and TOTO make.  
d) Health Faucet for all toilets.

**ELECTRICAL** : Cabling: Copper-concealed PVC conduit – Finolex  
Switches / MCBs: Anchor or equivalent make.  
Other: Provisions for ACs, Geysers, Fridge, Internet Washing Machine, TV and Telephones Points.

**NOTE** : VAT, Registration and Service Tax applicable as per government norms to (born by the purchaser).

Location that offers unmatched connectivity

## LOCATION MAP

Google Coordinates: 17.500119, 78.550773



### Education

Indus Universal School	3min
Kendriya Vidyalaya	5min
Billabong International School	15min
Bhavans Ramakrishna Vidyalaya	5min



### Recreation

Secunderabad Central	8min
Asian Radhika Movieplex	8min
Secunderabad Club	8min



### Hospitals

Poulomi Hospital	5min
Ankura Hospital	5min
Mayflower Hospital	5min



### Connectivity

Sainikpuri X Road	5min
AS Rao Nagar	5min
ECIL X Road	10min
ORR	20MIN

